

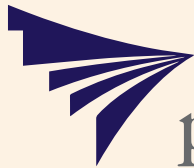


Koemmerling Aluminium Systems

Elegance | Excellence | Endurance



Elegance | Excellence | Endurance



profine
INTERNATIONAL PROFILE GROUP

**PEOPLE
PASSION
PROFILES**

Koemmerling, a German brand owned by profine GmbH, is one of the strongest and rapidly growing aluminium window and door systems in international markets. With a rich legacy and global expertise in advanced window and door systems, profine GmbH has been instrumental in developing and supplying world-class systems to the fenestration industry. It has come a long way and established its strong presence through a large network of channel partners.



Customer Focus

We value our customers and are committed to offering the most innovative and quality products and services with a minimum lead time and high competence. We believe in sustainable growth and have been successful in establishing a robust and durable business relationship with customers based on trust and human values. The growing portfolio of our customers is a testimony to the philosophy and work ethics we have developed, i.e., innovation, quality, and responsibility towards the environment. Our wide range of advanced window and door systems is the perfect complement to modern architecture and meets the ever-changing requirements of customers with promptness and customized solutions.



Koemmerling Aluminium Systems

Made with German precision, Koemmerling has been successful in bringing a fresh outlook to the fenestration industry. Its innovative and elegant range of aluminium window and door systems is a paradigm of quality and durability. Koemmerling is a trendsetter and offers various styles and shapes in an unlimited number of colour options. The Koemmerling systems are timeless, individual, and highly convincing, with many positive properties. The profiles are extremely durable and require minimal maintenance over their long service life. Moreover, Koemmerling aluminium systems are high in quality, colourfast, and 100% recyclable. Thanks to their high stability and load-bearing capacity, these systems can be produced in extraordinary sizes with various glass options.

Quality Commitment & Innovation

Koemmerling aluminium systems are known for their quality and German precision. The rich legacy of Koemmerling in the fenestration industry has been the success mantra of these aluminium window and door systems. The systems have been developed by the experienced R&D team of engineers at the German headquarters. These modern systems have successfully passed performance quality tests as per EN12207, EN12208, and EN12210 standards for air infiltration, static water penetration, and structural performance.

Koemmerling believes in innovation and continuous improvement in its growing product range; therefore, its investment commitment is quite evident. To remain steps ahead of the competition, Koemmerling has been investing in R&D, infrastructure expansion, and technical skill development. As a result, Koemmerling has been successful in introducing new and innovative window and door systems for all market segments at regular intervals, which shows how Koemmerling has been responding to the growing market demand for its products.

Advantages & Benefits

Koemmerling aluminium window and door systems offer the highest level of quality and security. The design aspects of these systems ensure perfect functionality at all times while keeping the aesthetics and surface finish intact for a longer service life. Their weather resistance attribute lends them long-term durability with minimal to no maintenance requirements. They fulfill virtually all architectural challenges affecting colour, shape, and design.



**HIGH
QUALITY**



**LOW
MAINTENANCE**



**WEATHER
PROOF**



**HIGH WIND
RESISTANCE**



**100%
RECYCLABLE**



**CHOICE
OF COLOURS**

Elegance | Excellence | Endurance

Casement Windows

Are you looking for new windows for your home or office? Look no further than our high-quality, advanced, stylish, and resilient Koemmerling aluminium casement window systems. These systems are a popular choice among homeowners and architects alike, and for a good reason.

Our systems are designed with the highest quality materials and cutting-edge technology to ensure maximum durability with minimal care. These systems offer an elegant and modern look that can enhance the aesthetic appeal of any property.

Incredibly easy to use - simply push or pull the window to open inside or outside and pull in or push it back to close. They are also highly functional and practical, providing excellent insulation, security, and ventilation.

If you're looking for a reliable and stylish casement window solution, Koemmerling aluminium systems are just the perfect choice for you.

A centre sealed casement window system

Inward / outward opening

Maximum sash panel size 0.70m (w) x 1.5m (h)

Wind load capacity up to 2 KPA

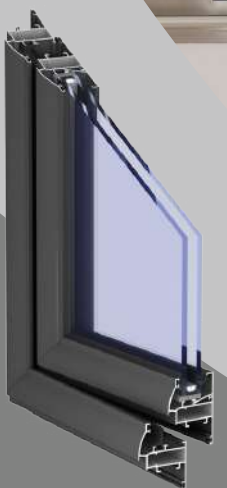
Elegant, modern window geometry with convex design sash

Range includes single panel opening window, double panel openable window, Tilt & Turn, French window, top hung and fix window

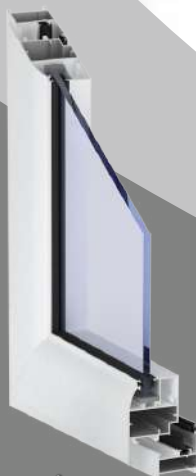
Can accommodate glass thickness from 5-24 mm

Lasting value thanks to durable quality of the highest level

Single and multiple locking to ensure higher security



Inward Opening



Outward Opening

APC 46 Window System

Casement Doors

The door reflects the style and aesthetics of the building, communicating to visitors the first impression of those living inside. Those seeking a stylish, modern, and impressive door for their home or office can vouch for Kömmerling aluminium casement door system.

These casement doors are resilient and can withstand even the harshest weather conditions, making them resistant to rust, corrosion, and fading, making them a long-lasting choice for any property, which means they can maintain their appearance and functionality for many years to come. Another benefit of aluminium casement doors is their security features. The multi-point locking system and strong frames with special glass make it difficult for intruders to break in.

Providing peace of mind for homeowners in terms of style, aluminium casement doors come in a variety of designs and finishes, ensuring that they can complement any property's aesthetic. They can be customized with different glass and colour options, allowing for a unique and personalized look.



A centre sealed casement door system

Inward / outward opening

Maximum sash panel size 1.0m (w) x 2.4m (h)

Wind load capacity upto 2 KPA

Elegant, modern residential door geometry with convex residential door design sash

Extra wide base profile

Can accommodate glass thickness from 5-24 mm

Low threshold door solution minimize the bottom frame

Single and multiple locking to ensure higher security



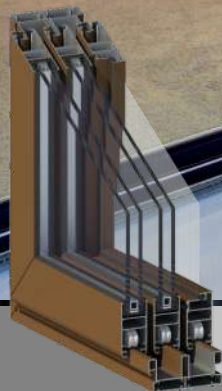
APC 46 Door System

Sliding Windows and Doors

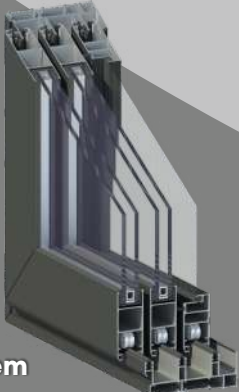
Comfort has many faces, like the way Koemmerling sliding systems open and close seamlessly. Its precision fits make it extremely quiet and easy to use. Even with large glazed areas, the Koemmerling profiles ensure that the sliding elements move in nearly perfect silence, a result of the high stability of the window and door sashes. One of the main benefits of aluminium sliding doors is their versatility. They can be used in a wide range of applications, including bedrooms, living rooms, patios, and balconies. They are perfect for spaces where there is limited clearance, as they do not require a large swing radius like traditional hinged doors.

Optionally, the sliding unit can be equipped with an insect screen, using a special sliding frame. This insect screen offers effective and reliable protection against vermin, mosquitoes, flies, and other insects.

Koemmerling aluminium sliding systems are an excellent choice for anyone looking for a versatile, durable, and stylish window and door solution.



APSL 31 System



APSL 31+ System

APSL 31 and APSL 31+ System
Sliding Window & Door Systems

A modular frame system

Sliding system offers two track, three track and four track

Can be produced in two, three, four and six panels

APSL 31 System - Maximum panel size 1.0m (w) x 1.8m (h)

APSL 31+ System - Maximum panel size 1.2m (w) x 2.4m (h)

Wind load capacity up to 2 KPA

Option for fly mesh

Can accommodate glass thickness from 5-22 mm

Single and multiple locking to ensure higher security

Sliding Folding Door



Elegance, wider opening, space-saving and sturdy are a few of the advantages of the uniquely designed Koemmerling modern sliding folding door system. They have increasingly become popular for the areas that require maximum opening to convert two spaces into one and vice versa, especially in the case of a big ballroom of a hotel, wide balconies, and living rooms having access to an open area, i.e. swimming pool, garden area, etc. The folding and sliding mechanism allows the door panels to be folded and slide away on one side, creating a fully open space to make entry or exit quite comfortable in the case of large gatherings. These doors are practical, smooth to operate, and add aesthetic benefits to both commercial and residential spaces.

In terms of style, Koemmerling aluminium sliding folding doors come in multiple colour options, ensuring they can complement any property's aesthetic. They can be customized with different glass options, colours, and hardware allowing for a unique and personalized look.



Frame/ low threshold profile system

Can be produced up to 11 panels

Wind load capacity up to 1.2 KPA

70 mm frame depth (Slim profiles for large glass area)

Heavy duty sliding folding door, suitable for use in commercial application

Four stainless steel wheels at the bottom and on top ensure a smooth and consistent operation of the larger size door

System accommodate glass thickness from 8 to 35mm

Three point hook locking

Anti-finger trapping gasket



APSF 70 System
Sliding Folding Door System

Elegance | Excellence | Endurance

OPULENZ

EXPERIENCE THE GRANDEUR

Premium Slim Interlock Sliding Door System

Premium, elegant, seamless, and slim design are what defines Opulenz interlock sliding door systems and makes them a class apart and the most popular premium sliding system amongst homeowners, architects, and builders. One of the primary benefits of Opulenz premium sliding doors is their sleek design. They feature clean lines and minimalist designs that can complement any property's design and aesthetics. The slim frames, concealed hardware, and large glass panes create a modern and elegant look that adds value to any property.

Opulenz offers maximum access to outdoor living spaces, making them an excellent choice for properties with patios, decks, or balconies without worrying about their performance and maintenance. In terms of security, premium sliding doors are highly secure. They feature multi-point locking systems, strong frames, and security glass that can withstand force and impact. For people who are looking to have a wide opening for their balconies in villas and high-rise buildings, these premium doors are the ideal choice for properties looking for maximum security and peace of mind.

Maximum panel size 2m (w) x 4m (h)

Can be produced up to 6 panels

Robust highly stable can bear wind load up to 3 KPA

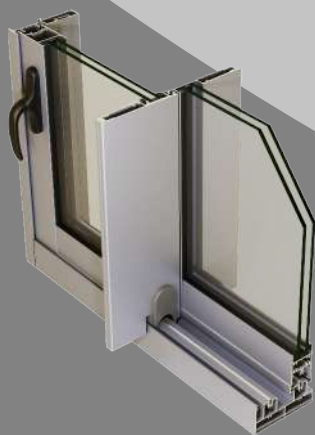
Specially designed rollers can bear the load of up to 400 kg per panel

Glass thickness SG and DGU from 8-36 mm

Interlock width from 22-25 mm

Corner opening is also available

Multiple locking to ensure higher security



OPULENZ
Sliding Door System

MAJESTIC

Sleek Interlock Sliding Door System

Engineered with German precision, Majestic—the sleek interlock sliding door system—is a blend of elegance and innovation. Less visible frames, more glass openings for an unobstructed view, and contemporary designs transform your living space into a place you can dream of. The sleekness creates the illusion of no boundary between indoors and outdoors and transforms the space into an impressive property.

The system is designed in accordance with modern building requirements and varied weather conditions to match the aesthetic desires of all classes. The salient features and the engineering of this system make it the epitome of performance, durability, and aesthetics. The system outperforms the performance parameters like high wind load, water penetration, and air infiltration which makes it the preferred choice amongst architects, builders, and fenestration consultants. The flexibility of height and width further enhances its usability for any premises, be it residential apartments, villas, commercial complexes, hotels, and institutions.



Kömmerling®
Aluminium Systems



Maximum panel size 1.5m (w) x 3m (h)

Can be produced up to 6 panels

Wind load capacity up to 2.5 KPA

Sightline or face width is 33 mm

Rollers can bear the load up to 300 kg per panel

Glass thickness SG and DGU from 5-32 mm

2 and 3 track frame with SS guide rail and inside lip with flymesh option

Multiple locking to ensure higher security



MAJESTIC
Sliding Door System

Elegance | Excellence | Endurance

GRANDE

Premium Casement Door System

A fusion of style, durability, and versatility that is perfect for any home. Grande, a premium casement door system, engineered with special attention to the modern architectural style. International quality parameters are being kept at the core of its design, which will outperform any weather challenges. With a high wind load capacity, water-tight design, and various colourfast options, this door is sure to last for years to come.

The casement door system has been designed to suit various building designs, be it home, office, or any other building. The advantage of this system is its extraordinary size, which enhances its usability and allows it to complement buildings of any architectural shape or size, while the robust and elegant design adds a touch of class and attention.

This high-performing modern system gives you the option of single-sash, double-openable, fixed and openable door to meet the architecture/ interior requirements of your dwelling. If you are looking for an advanced, elegant, robust, and high-performing door that will stand the test of time, then you can vouch for the Grande casement door.



Maximum panel size 1.4m (w) x 3m (h)

Wind load capacity up to 2.5 KPA

Glass thickness SG and DGU from 5-34 mm

Inside & outside open sash option

Fix, Single and French doors

Bottom frame/Low threshold profile

Single and multiple locking to ensure higher security

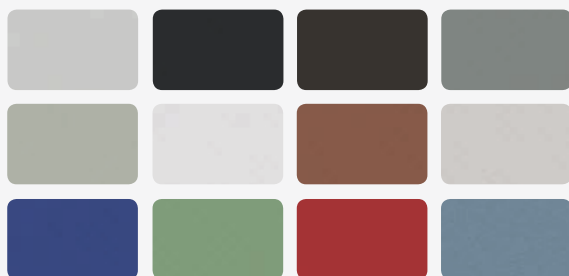
GRANDE
Casement Door System



Myriad Colours of Perfection

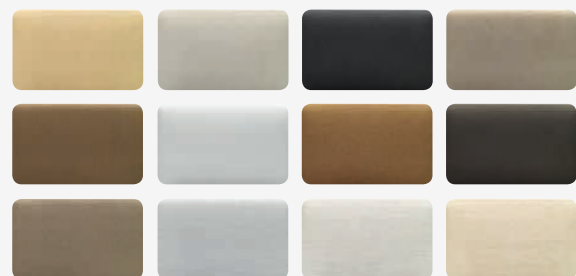
POWDER FINISHING FOR THE COLOUR YOU WANT

Thanks to the high-quality enameling of the powder-finished profile, the elements of aluminium retain their original brilliance even after many years and do not need a fresh coat of paint. You can choose from the whole RAL palette, which has over 200 colours. These RAL colours are available in glossy, matt, and textured.



ANODIC FINISHING FOR A BRILLIANT LOOK

The process yields brilliant surfaces and characteristic metallic effects. Anodic finishing is beneficial, not only for the look. It also provides long-lasting protection against increasingly aggressive environmental effects. Furthermore, anodized surfaces are insensitive to mechanical effects and are easy to clean.





Reasons to choose Koemmerling

- Rich legacy behind the system design and quality.
- Systems meet quality parameters as per EN12207, EN12208, and EN12210 standards.
- A wide range of systems for all market segments.
- Unlimited number of colour options to complement the aesthetics of your building.
- One of the most trusted brands amongst architects, fenestration consultants, and developers.



Elevate your space with Quality, Style, and Uniqueness

Koemmerling aluminium systems are renowned for their robustness and elegant design. These systems are engineered to endure severe weather conditions and have demonstrated their effectiveness during typhoons. The precision of German engineering allows these systems to adapt to various architectural needs, whether for low-rise apartments or towering buildings. Their quality is supported by performance metrics such as structural performance, air infiltration, and static water penetration. Additionally, the variety of color options enhances the aesthetic appeal of your space, allowing you to complement your interior style. Koemmerling products are fully recyclable and can be reused to create windows and doors repeatedly, making them one of the most sustainable choices for doors and windows while promoting sustainable building practices.

ELEGANCE
EXCELLENCE
ENDURANCE



profine Middle East Trading LLC

Corporate Office:



Office No. 308, Mohamed Abdul Aziz,
Al Mararr 2, Duabi UAE
Tel. +971 50 795 1002
koemmerling.aluminium@profine-group.com
www.koemmerlingaluminium.com

Warehouse:

Plot No. 0044, Unit No. 4, New Industrial
Area, Umm Dearaa, Street Union, Emirate of
Umm Al Quwain, UAE

Headquarters:



profine GmbH
Zweibrücker Straße 200
D-66954 Pirmasens
Germany
www.profine-group.com

